



HOW TO KEEP MEMBERS ONLY LOG-IN ACTIVE IN INTERNET EXPLORER

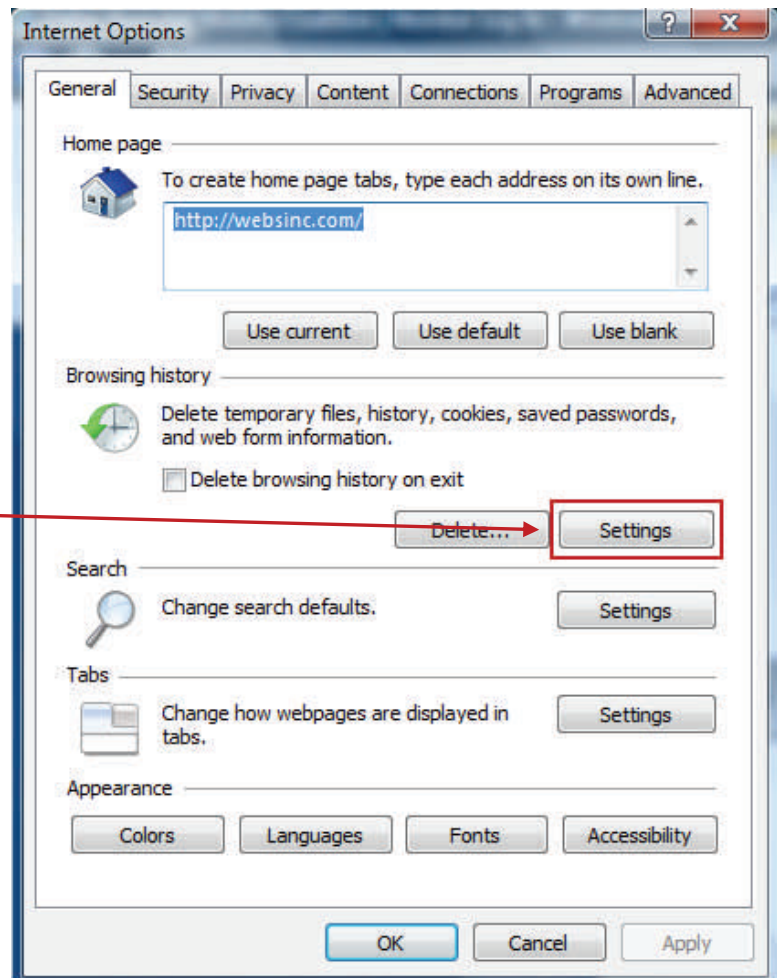
If after logging in to the DRMC Members Only area, using the Internet Explorer browser, you click on one of the page links in the top navigation bar and the “MEMBER AREA” button does not appear in the top right corner of the page, which normally allows you to go directly back to the Member Area, you need to perform the following steps.

In the Internet Explorer (IE) browser window, click on “Tools”.

This opens a menu where you then click on the “Internet Options” menu item.

This opens the “Internet Options” dialog box.

Click on the “Settings” button in the “Browsing history” section.



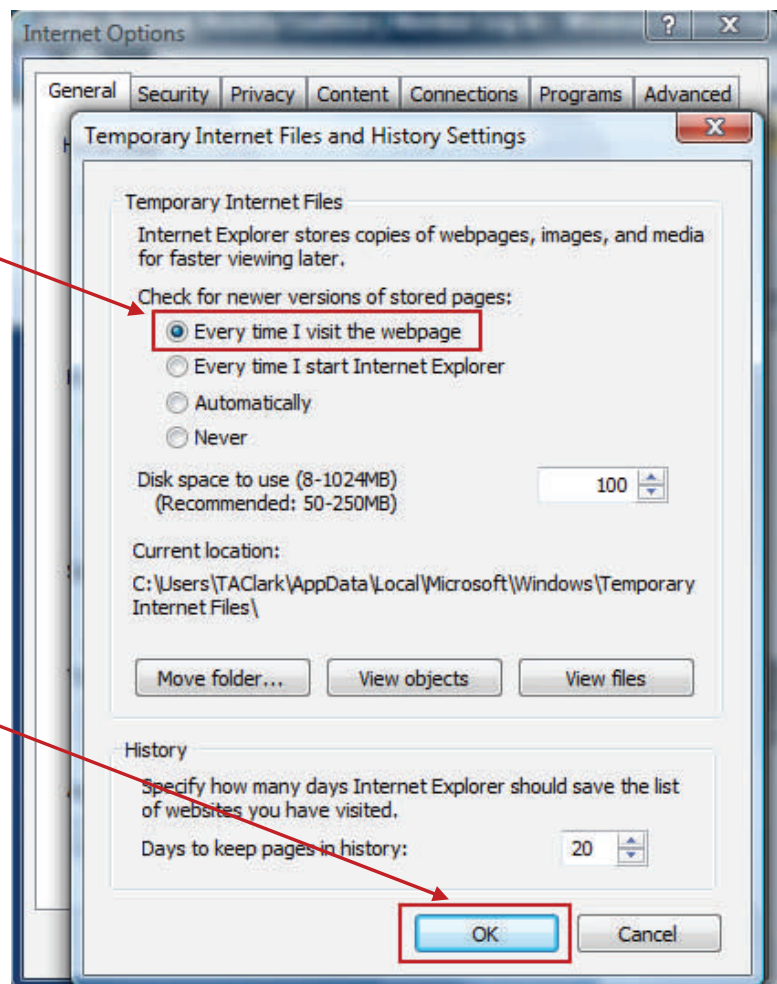


HOW TO KEEP MEMBERS ONLY LOG-IN ACTIVE IN INTERNET EXPLORER

Clicking the “Settings” button opens the “Temporary Internet Files and History Settings” dialog box.

Click on the “Every time I visit the webpage” option under “Check for newer versions of stored pages:”.

Next, click the “OK” button to save this settings change.

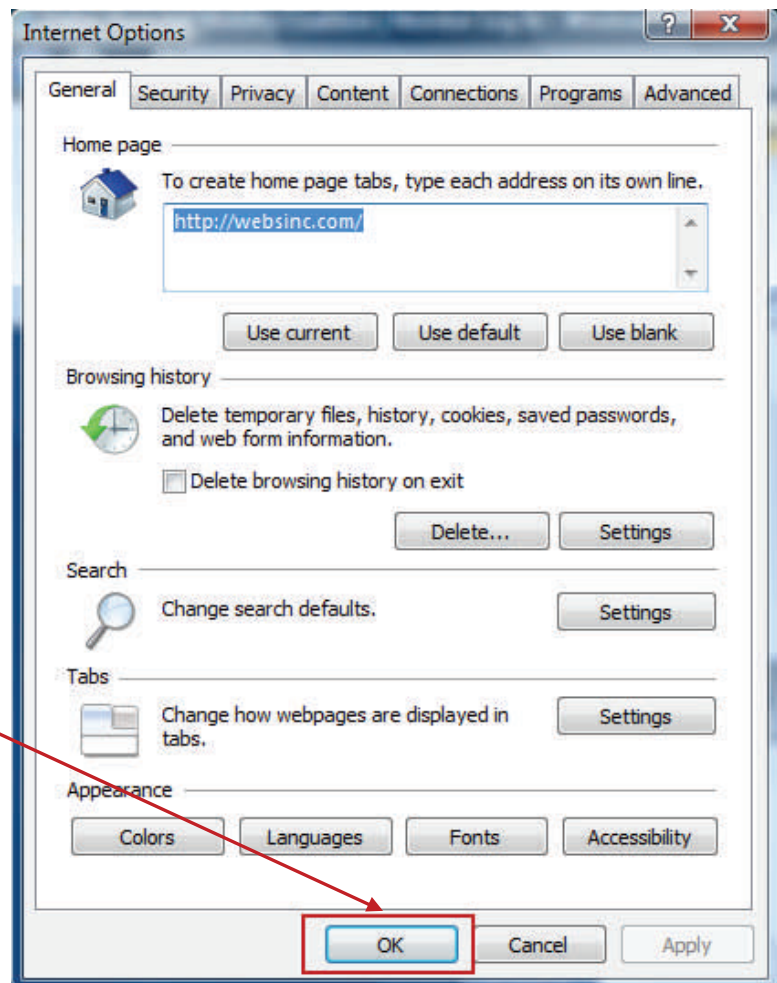




HOW TO KEEP MEMBERS ONLY LOG-IN ACTIVE IN INTERNET EXPLORER

After clicking the “OK” button, you are returned to the “Internet Options” dialog box.

Finally, click the “OK” button to finish the process.



This action ensures that you will always be viewing the most current version of every web page you are browsing. You do not need to change this setting again, as this will make sure you are viewing the most current version of every web site you have viewed in the past.